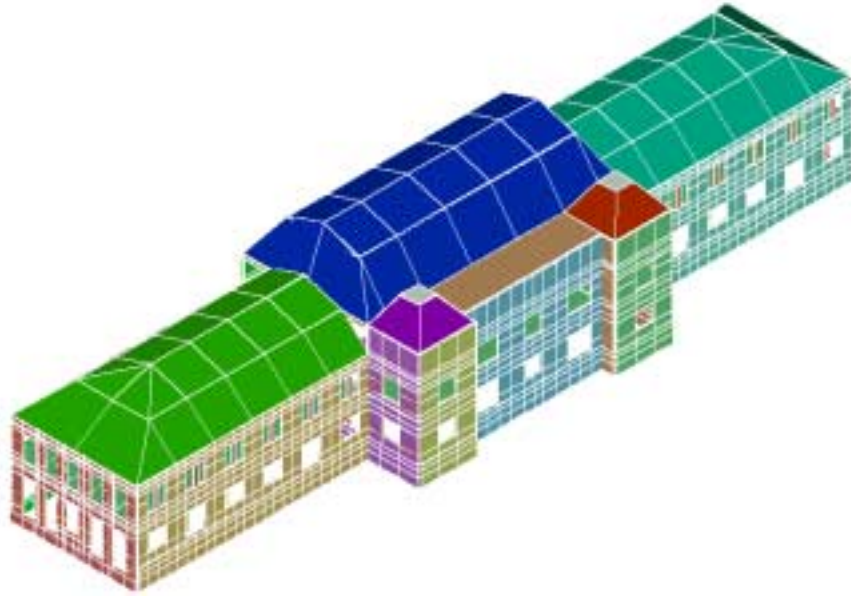


# Performance Based Evaluation of Buildings



## Nonlinear Pushover and Time History Analysis

Reference Manual  
Trevor E Kelly, S.E.  
Holmes Consulting Group Ltd



Revision 5: October, 2001

# © Holmes Consulting Group Ltd

Level 1  
11 Aurora Terrace  
P O Box 942  
Wellington  
New Zealand

Telephone 64 4 471 2292

Facsimile 64 4 471 2336

[www.holmesgroup.com](http://www.holmesgroup.com)

## The Holmes Group of Companies

<b>Company</b>	<b>Offices In</b>	<b>Services</b>
<b>Holmes Culley</b>	San Francisco, CA	Structural Engineering
<b>Holmes Consulting Group</b>	New Zealand (Auckland, Wellington, Christchurch, Queenstown)	Structural Engineering
<b>Holmes Fire &amp; Safety</b>	New Zealand (Auckland, Wellington, Christchurch) Australia (Sydney)	Fire Engineering Safety Engineering
<b>Optimx</b>	New Zealand (Wellington)	Risk Assessment
<b>Holmes Composites</b>	San Diego, CA	Structural Composites

Copyright © 2001. This material must not be copied, reproduced or otherwise used without the express, written permission of Holmes Consulting Group.

## DISCLAIMER

The information contained in these Design Guidelines has been prepared by Holmes Consulting Group Limited (*Holmes*) as standard Design Guidelines and all due care and attention has been taken in the preparation of the information therein. The particular requirements of a project may require amendments or modifications to the Design Guidelines.

Neither Holmes nor any of its agents, employees or directors are responsible in contract or tort or in any other way for any inaccuracy in, omission from or defect contained in the Design Guidelines and any person using the Design Guidelines waives any right that may arise now or in the future against Holmes or any of its agents, employees or directors.

## FOREWORD

This reference manual represents the current status of the Holmes Consulting Group procedures for the implementation of performance based evaluation of existing buildings. The procedures are continually evolving and so features may have been added and/or changes made which are not documented in the manual.

Performance based evaluation is a complex procedure which requires a high level of technical skill and engineering judgment to obtain valid results. The tools described in this Manual are just tools and do not substitute for skill and judgment.

All projects must be performed in accordance with HCG Quality Assurance requirements. In particular, the final product must be reviewed by a Senior Engineer who has experience in the seismic response and performance of buildings.



## CONTENTS

<b>1</b>	<b>INTRODUCTION</b>	<b>1</b>
1.1	CODE COMPLIANCE ISSUES	1
1.2	OBJECTIVES OF THE HCG PROCEDURE	2
<b>2</b>	<b>PERFORMANCE BASED DESIGN</b>	<b>3</b>
2.1	NEW ZEALAND PRACTICE	3
2.2	UNITED STATES PRACTICE	3
2.3	ANALYSIS TYPES	4
2.3.1	LINEAR STATIC PROCEDURE	5
2.3.2	LINEAR DYNAMIC PROCEDURE	5
2.3.3	NON-LINEAR STATIC PROCEDURE	5
2.3.4	NON-LINEAR DYNAMIC PROCEDURE	6
2.4	IMPLICATIONS OF NDP PROCEDURE	7
2.5	PERFORMANCE OBJECTIVES	8
2.5.1	SETTING OBJECTIVES	8
2.5.2	ACHIEVING PERFORMANCE OBJECTIVES	10
<b>3</b>	<b>HOLMES CONSULTING GROUP SOFTWARE</b>	<b>12</b>
3.1	MODELA SPREADSHEET AND PROGRAM	12
3.2	ANSR-L PROGRAM	12
3.3	ANSROUT SPREADSHEET AND PROCESSA PROGRAM	12
3.4	COMPUTER SET-UP	13
3.5	AUTOCAD PROGRAM	14
3.6	COMPUTER RESOURCE DEMANDS	14
3.6.1	MEMORY REQUIREMENTS	14
3.6.2	CPU TYPE	14
3.6.3	DISK SPACE	15
3.6.4	EXECUTION TIMES	15
<b>4</b>	<b>EARTHQUAKE LOADS</b>	<b>17</b>
4.1	DEFINITION OF LOADS	17
4.1.1	GROUND MOTION AMPLITUDE	17
4.1.2	AMPLITUDE SCALING OF EARTHQUAKE RECORDS	17
4.1.3	FREQUENCY SCALING OF EARTHQUAKE RECORDS	18
4.2	NEW ZEALAND PROJECTS	18



4.2.1	NZS4203 REQUIREMENTS FOR NEW BUILDINGS	18
4.2.2	NZNSSEE REQUIREMENTS FOR EXISTING BUILDINGS	19
4.2.3	SCALING OF EARTHQUAKE RECORDS	20
4.2.4	EARTHQUAKE RECORD SELECTION	20
4.3	UNITED STATES PROJECTS	25
4.3.1	UBC REQUIREMENTS FOR NEW BUILDINGS	25
4.3.2	FEMA-273 REQUIREMENTS FOR EXISTING BUILDINGS	25
4.3.3	SCALING OF EARTHQUAKE RECORDS	26
4.3.4	EARTHQUAKE RECORD SELECTION	26
4.4	USER-SELECTED RECORDS	28

## **5 MODELING TECHNIQUES 29**

---

5.1	FINITE ELEMENT MODELING	29
5.2	FLEXURAL ELEMENTS	30
5.3	STRUCTURAL WALL ELEMENTS	31
5.3.1	FLEXURAL MODELING USING GAPS	33
5.3.2	FLEXURAL MODELING USING EQUIVALENT SHEAR STRENGTH	33
5.3.3	FLEXURAL MODELING USING FRAME ELEMENTS	33
5.3.4	OTHER YIELDING MECHANISMS IN SHEAR WALLS	34
5.4	COUPLING BEAMS	34
5.5	WALL BOUNDARY ELEMENTS	34
5.6	FACE LOADED WALLS	34
5.7	RESTRAINTS	35
5.8	FLOORS	35
5.9	MASS AND WEIGHT IN BUILDING MODELS.	36
5.9.1	DISTRIBUTION OF WEIGHT	36
5.9.2	MASS DEGREES OF FREEDOM	37
5.9.3	RECOMMENDED MASS OPTIONS	37
5.9.4	ECCENTRICITY OF MASS	38
5.10	BEAM LOADS	39
5.11	FOUNDATION UPLIFT	40
5.12	BASE ISOLATORS AND DAMPERS	40
5.13	MULTIPLE BUILDINGS	41
5.14	STRENGTHENING MEASURES	41
5.14.1	NEW LATERAL LOAD RESISTING ELEMENTS	41
5.14.2	STRENGTHENING EXISTING ELEMENTS	41
5.15	GEOMETRIC STIFFNESS (P- $\Delta$ ) EFFECTS	42

## **6 MATERIAL AND ELEMENT MODELS 44**

---

6.1	DEGRADING STRENGTH & STIFFNESS OF FLEXURAL ELEMENTS	44
6.1.1	FORMULATION OF DEGRADATION	44
6.1.2	IMPLEMENTATION OF DEGRADATION COEFFICIENTS	46
6.2	DEGRADING STRENGTH AND STIFFNESS OF PANEL SECTIONS	51
6.3	REINFORCED CONCRETE WALL MODELING	53
6.3.1	SHEAR STRENGTH ENVELOPE	53
6.3.2	SHEAR DEGRADATION COEFFICIENTS	56
6.3.3	FLEXURE DOMINATED SHEAR WALLS	59
6.3.3.1	EFFECT OF GRID REFINEMENT	61



6.3.3.2	EFFECT OF AXIAL LOAD	65
6.3.3.3	WALLS WITH BOUNDARY ELEMENTS	66
6.3.3.4	EFFECTIVE GAP LENGTH	67
6.3.3.5	RECOMMENDATIONS FOR MODELING FLEXURAL YIELD	68
6.4	REINFORCED CONCRETE FRAME MODELING	69
6.4.1	BEAM ELEMENT HYSTERESIS	69
6.5	STEEL BUILDING MODELING	72
6.6	UNREINFORCED MASONRY WALL (URM) BUILDINGS	73
6.6.1	NZNSSEE RED BOOK STRENGTHS	73
6.6.2	FEMA STRENGTHS	75
6.6.3	TESTING OF MASONRY	76
6.6.4	CYCLIC LOADING CHARACTERISTICS	77
6.6.5	ROCKING STRENGTH	78
6.6.6	URM EVALUATION STRATEGY	79
6.6.7	URM STRENGTHENING USING FRP	80
6.7	TIMBER MODELING	80
6.7.1	TIMBER FLOORS	80
6.8	FIBER REINFORCED PLASTICS (COMPOSITES)	82
6.8.1	TEST DATA FOR FRP STRENGTHENING	83

## **7 MODEL PREPARATION : MODELA 86**

---

7.1	UNITS	86
7.2	FILES WRITTEN BY MODELA	87
7.3	ANSR-L RUN FILE IDENTIFICATION	87
7.4	CONSTANTS WORKSHEET	88
7.5	INTERACTION SHEET	88
7.5.1	JOB TITLE	88
7.5.2	PROBLEM SIZE AND PROGRAM LOCATION	88
7.5.3	TIME HISTORY ANALYSIS	89
7.5.4	FORCE PUSHOVER ANALYSIS	90
7.5.5	DISPLACEMENT PUSHOVER	90
7.5.6	MASS LOCATIONS FOR TIME HISTORY ANALYSIS	90
7.5.7	SPECIAL FUNCTIONS	91
7.5.7.1	CLEAR OLD DATA	91
7.5.7.2	CONVERT ETABS	91
7.5.7.3	FIND COMMON SIZE	91
7.5.7.4	READ COMMON SIZE	92
7.5.7.5	HIDE / UNHIDE SHEETS	93
7.6	ANALYSIS DATA	94
7.6.1	NZS 4203 SEISMIC DATA	94
7.6.2	SITE SPECIFIC SEISMIC DATA	95
7.6.3	INCREMENTAL EARTHQUAKE	95
7.6.4	MASSES AND WEIGHT	96
7.6.4.1	INCLUDE ELEMENT WEIGHT	96
7.6.4.2	INCLUDE ELEMENT MASS	97
7.6.4.3	INCLUDE UDL AS MASS	97
7.6.4.4	DISTRIBUTE DIAPHRAGM MASS AS WEIGHT	97
7.6.4.5	LUMP ELEMENT MASS TO DIAPHRAGM	97
7.6.4.6	ASSIGN MISSING MASS HORIZONTALLY	98



7.6.4.7	ASSIGN MISSING MASS VERTICALLY	98
7.6.5	TIME STEP	98
7.6.6	MAXIMUM DISPLACEMENT	99
7.6.7	DAMPING	99
7.6.8	COORDINATE SORT ORDER	101
7.6.9	FORCE TOLERANCE	101
7.6.10	NODE TOLERANCE	102
7.6.11	OUT OF PLANE WALLS	102
7.6.12	TIME HISTORY OUTPUT	103
7.6.13	SPECIAL FEATURES	103
7.6.14	NON-STANDARD DAMPING	104
7.6.15	UBC FACTORS	104
7.7	ELEVATIONS AND NODES	104
7.7.1	COLUMN LINES	105
7.7.2	ELEVATIONS	106
7.7.3	TIME HISTORY OUTPUT	107
7.8	MODEL PLOT	107
7.9	MATERIALS AND SECTIONS	109
7.9.1	MASONRY	110
7.9.2	CONCRETE	111
7.9.3	STEEL	112
7.9.4	TIMBER	112
7.9.5	OTHER MATERIALS	114
7.9.6	PANEL SECTIONS	115
7.9.7	BEAM/COLUMN/BRACE SECTIONS	115
7.9.7.1	MODELING CONSIDERATIONS FOR FLEXURAL ELEMENTS	116
7.9.7.2	FLEXURAL ELEMENT STIFFNESS PROPERTIES	117
7.9.7.3	FLEXURAL ELEMENT STRENGTH PROPERTIES	118
7.9.7.4	FLEXURAL ELEMENT DEGRADATION	120
7.9.8	BASE ISOLATORS	121
7.9.9	DAMPERS	122
7.10	PLOTTING ELEMENT HYSTERESIS	123
7.11	ELEMENT TYPES	124
7.11.1	ELEMENT OUTPUT CODE	124
7.11.2	WALLS	125
7.11.3	COLUMNS	126
7.11.4	BEAMS	127
7.11.5	BRACES	128
7.11.6	ISOLATORS AND DAMPERS	129
7.11.7	GAPS	129
7.12	FLOORS	131
7.12.1	RIGID FLOORS	132
7.12.2	FLEXIBLE FLOORS	133
7.13	CONNECTIVITY	134
7.14	MASSES AND LOADS	135
7.15	DEGREES OF FREEDOM	136
7.15.1	CONSTRAINED DEGREES OF FREEDOM	136
7.15.2	EQUAL DEGREES OF FREEDOM	137
7.16	CALCULATION OF FLOOR MASS AND WEIGHTS	138
7.17	AUTOCAD DXF FILES	140
7.17.1	IMPORTING THE DXF FILES	142



7.17.2	SETTING VIEWPOINT	142
7.17.3	DISPLAY, PRINT AND COPY OPTIONS	143
7.17.4	DISPLAYING SELECTED ELEMENTS	143
7.17.5	WALL COLUMN ELEMENTS	144

## **8 TIME HISTORY ANALYSIS 145**

8.1	COORDINATE SYSTEM	145
8.2	RUNNING ANSR-L	146
8.3	GETTING MEMORY REQUIREMENTS	147
8.4	MEASURING EXECUTION TIMES	148
8.5	MINIMIZING MEMORY REQUIREMENTS AND EXECUTION TIMES	148
8.5.1	GRID DEFINITION	148
8.5.2	FLEXIBLE FLOORS	149
8.5.3	COORDINATE NUMBERING	149
8.5.4	PLACEMENT OF DIAPHRAGM NODES	149
8.5.5	DEGREE OF FREEDOM ORDER	150
8.6	MODES FOR RUNNING ANSR-L	150
8.6.1	BATCH MODE	150
8.6.2	INTERACTIVE MODE	151
8.6.2.1	UNDEFORMED SHAPE	152
8.6.2.2	ANIMATION MENU SETTINGS	154
8.6.2.3	ANIMATION DURING ANALYSIS	155
8.6.3	AUTOMATIC INTERACTIVE MODE	156
8.6.4	SAVE AND RESTART OF ANALYSES	157
8.7	SETTING INTERACTIVE SCREENS IN INPUT FILE	157
8.7.1	OPTIONS FOR ANIMATION	159
8.7.2	OPTIONS FOR NODAL COMPONENTS	160
8.7.3	OPTIONS FOR ELEMENT COMPONENTS	160
8.8	SAVING AS AVI MOVIE	161
8.9	ANALYSIS DOES NOT START	161
8.9.1	FILE OPENING ERROR	162
8.9.2	ERROR DURING READ INPUT PHASE	162
8.9.3	ALLOWABLE DIMENSIONS EXCEEDED	162
8.9.4	ERROR DURING EQUATION SOLUTION	163
8.10	ANALYSIS TERMINATION	163
8.10.1	DISPLACEMENT EXCEEDED	164
8.10.2	CONVERGENCE NOT ACHIEVED	165
8.11	OUTPUT FILES	165
8.12	NUMERICAL STABILITY OF SOLUTION	166
8.13	ACCUMULATION OF ENVELOPES IN ANSR-L	168

## **9 NSP (PUSHOVER ANALYSIS) 170**

9.1	NSP OR FORCE PUSHOVER	170
9.1.1	LOAD VECTORS	171
9.1.2	OBTAINING PERIODS AND MODE SHAPES	173
9.1.3	DEFINING FORCE PUSHOVER	173
9.1.4	WRITE ANSR PUSHOVER MODEL	174
9.1.5	RESULTS FOR PUSHOVER ANALYSIS	174



9.1.6	CALCULATING TARGET DISPLACEMENTS	175
9.1.7	EVALUATING NSP PERFORMANCE	178
9.2	DISPLACEMENT PUSHOVER	180
9.2.1	COLUMN LINE	180
9.2.2	LEVEL NUMBER	180
9.2.3	NUMBER OF CYCLES	181
9.2.4	LOAD TYPE	181
9.2.5	LOAD INCREMENT	181
9.2.6	LOAD DIRECTION	181
9.2.7	CYCLE 1 AMPLITUDE	181
9.2.8	NUMBER OF CYCLES PER AMPLITUDE	181
9.2.9	PRODUCING DISPLACEMENT PUSHOVER CURVE	182
9.3	SPECIAL CONSIDERATIONS FOR NSP	184
9.3.1	EXAMPLE APPLICATION	184
9.3.2	RECOMMENDATIONS	187
9.4	DAMPING DECAY	187

## **10 RESULTS PROCESSING : ANSROUT 189**

---

10.1	INTERFACE	189
10.1.1	PROGRAM LOCATION.	190
10.1.2	SETTING FILE NAMES	190
10.1.3	CLEAR ALL RESULTS	191
10.1.4	GET GAP FORCES	191
10.1.5	GET ENVELOPE TIMES	191
10.1.6	SELECTING OUTPUT	191
10.1.6.1	ELEMENT OUTPUT	192
10.1.6.2	NODAL OUTPUT	192
10.1.7	SPECIAL FEATURES	192
10.1.8	READ RESULTS	193
10.1.9	IMPORT RESULTS	193
10.2	COORDINATES	193
10.3	TIME HISTORIES OF RESULTS	194
10.3.1	RAW DATA	194
10.3.1.1	NODAL OUTPUT	195
10.3.1.2	ELEMENT OUTPUT	195
10.3.2	DISPLACEMENTS	195
10.3.3	ACCELERATIONS	196
10.3.4	DRIFTS	196
10.3.5	ELEMENTS	196
10.3.6	FORCE PUSHOVER AND DISPLACEMENT PUSHOVER	197
10.4	SUMMARY SHEET	198
10.5	AREAS	198
10.6	DISPLACEMENTS	199
10.7	ENVELOPES	199
10.8	SHEARS	199
10.9	ELEMENTS	199
10.9.1	TRUSSES	200
10.9.2	BEAMS	200
10.9.3	COLUMNS	201



10.9.4	WALLS	202
10.9.5	FLOORS	203
10.9.6	GAPS	203
10.10	MODEL PLOT	204
10.11	CONSTANTS SHEET	207
10.12	AUTOCAD DXF FILES	208
10.13	CRACK PATTERN FILES	209
10.14	OUTPUT FILES	210

## **11 ACCEPTANCE CRITERIA** **212**

---

11.1	DRIFTS	212
11.2	CONCRETE COLUMNS AND BEAMS	212
11.2.1	FEMA-273 GUIDELINES	213
11.2.2	NZNSSEE GUIDELINES	214
11.2.2.1	CURVATURE DUCTILITY	214
11.2.2.2	SHEAR STRENGTH	215
11.3	CONCRETE BEAM COLUMN JOINTS	216
11.4	CONCRETE WALLS	216
11.5	UNREINFORCED MASONRY WALLS	218
11.5.1	OUT-OF-PLANE WALLS	218
11.6	REINFORCED MASONRY WALLS	219
11.7	WALLS STRENGTHENED WITH FRP	219
11.7.1	ANCHORAGE OF FRP	220
11.8	STEEL COLUMNS AND BEAMS	221
11.9	TIMBER FLOORS	222
11.10	FOUNDATIONS	222
11.11	NON-STRUCTURAL COMPONENTS AND CONTENTS	223

## **12 EVALUATING RESPONSE** **224**

---

12.1	PERIOD OF RESPONSE	224
12.2	DISPLACEMENTS AND DRIFTS	226
12.3	ACCELERATIONS	226
12.3.1	VALIDATION OF THE MODEL.	226
12.3.2	LOADS ON COMPONENTS.	228
12.4	OVERALL BUILDING HYSTERESIS	228
12.5	COLUMNS	229
12.5.1	CALCULATING CURVATURE DUCTILITY CAPACITY	229
12.5.2	YIELD CURVATURE	230
12.5.3	SPREADSHEET CALCULATIONS	231
12.6	BEAMS	232
12.7	BEAM-COLUMN JOINTS	233
12.8	WALLS	234
12.9	FOUNDATIONS	235



<b>13 FUTURE DEVELOPMENTS</b>	<b>236</b>
<b>14 PROJECT LIST</b>	<b>237</b>
<b>15 TROUBLESHOOTING</b>	<b>246</b>
15.1 MODEL A	246
15.2 ANSR-L	246
15.3 PROCESS A	247
15.4 PUSH-OVER ANALYSIS	247
15.5 AUTOCAD DRAWINGS	247
<b>16 BIBLIOGRAPHY</b>	<b>248</b>



## LIST OF FIGURES

FIGURE 2-1 NONLINEAR STATIC PROCEDURE (NSP).....	6
FIGURE 2-2 NONLINEAR DYNAMIC PROCEDURE (NDP) .....	7
FIGURE 3-1 REDUCTIONS IN COMPUTER EXECUTION TIME .....	16
FIGURE 4-1 EARTHQUAKE RECORDS USED FOR ROCK SITES .....	22
FIGURE 4-2 EARTHQUAKE RECORDS USED FOR INTERMEDIATE SITES .....	23
FIGURE 4-3 EARTHQUAKE RECORDS USED FOR SOFT SITES .....	24
FIGURE 4-4 UBC DESIGN RESPONSE SPECTRUM.....	25
FIGURE 4-5 FEMA-273 GENERAL RESPONSE SPECTRUM .....	26
FIGURE 4-6 EXAMPLE SCALED RECORDS .....	28
FIGURE 5-1 PLANE STRESS ELEMENT GRIDS .....	31
FIGURE 5-2 MODELING ACCURACY .....	32
FIGURE 5-3 GEOMETRIC STIFFNESS EFFECTS .....	43
FIGURE 6-1 PARAMETERS FOR SPECIFYING STRENGTH DEGRADATION.....	45
FIGURE 6-2 DEGRADING STIFFNESS RELATIONSHIP .....	45
FIGURE 6-3 NO STIFFNESS DEGRADATION ; NO STRENGTH DEGRADATION.....	48
FIGURE 6-4 MODERATE STIFFNESS DEGRADATION ( $\alpha=0.5$ ) NO STRENGTH DEGRADATION .....	48
FIGURE 6-5 EXTREME STIFFNESS DEGRADATION ( $\alpha=1.0$ ) NO STRENGTH DEGRADATION.....	49
FIGURE 6-6 MODERATE STIFFNESS DEGRADATION ( $\alpha=0.5$ ) WITH STRENGTH DEGRADATION .....	49
FIGURE 6-7 MODERATE STIFFNESS DEGRADATION ( $\alpha=0.5$ ) WITH STRENGTH DEGRADATION .....	50
FIGURE 6-8 MODERATE STIFFNESS DEGRADATION ( $\alpha=0.5$ ) WITH RAPID DEGRADATION .....	50
FIGURE 6-9 NON-SYMMETRICAL STIFFNESS DEGRADATION AND STRENGTH DEGRADATION.....	51
FIGURE 6-10 SHEAR STRESS-STRAIN ENVELOPE CURVE.....	52
FIGURE 6-11 UNLOADING CHARACTERISTICS.....	53
FIGURE 6-12 HYSTERESIS OF SHEAR DOMINATED WALL .....	54
FIGURE 6-13 HYSTERESIS OF FLEXURE DOMINATED WALL .....	55
FIGURE 6-14 HYSTERESIS OF SQUAT WALL.....	55
FIGURE 6-15 ENVELOPE FOR CONCRETE WALLS .....	56
FIGURE 6-16 HYSTERESIS : NO DEGRADATION COEFFICIENTS .....	57
FIGURE 6-17 $\alpha=0.5$ $\beta=0.0$ $x_{KK} = 2.67$ $D_{KODE} = 0.4$ .....	58
FIGURE 6-18 $\alpha=0.5$ $\beta=0.0$ $x_{KK} = 2.67$ $D_{KODE} = 0.75$ .....	58
FIGURE 6-19 $\alpha=0.5$ $\beta=0.0$ $x_{KK} = 2.67$ $D_{KODE} = 0.10$ .....	59
FIGURE 6-20 $\alpha=0.5$ $\beta=0.0$ $x_{KK} = 1.00$ $D_{KODE} = 0.10$ .....	59
FIGURE 6-21 REINFORCING BAR UNDER INCREASING CYCLIC DISPLACEMENT.....	61
FIGURE 6-22 12 HORIZONTAL X 19 VERTICAL .....	63
FIGURE 6-23 12 HORIZONTAL X 6 VERTICAL .....	63
FIGURE 6-24 6 HORIZONTAL X 6 VERTICAL .....	64
FIGURE 6-25 1 HORIZONTAL X 6 VERTICAL .....	64
FIGURE 6-26 1500 KN AXIAL LOAD (1.9 MPa) .....	65
FIGURE 6-27 ZERO AXIAL LOAD .....	65
FIGURE 6-28 SHEAR PANELS IN WEB ELASTIC; GAP EFFECTIVE LENGTH 50 MM .....	66
FIGURE 6-29 SHEAR PANELS IN WEB CRACKED; GAP EFFECTIVE LENGTH 50 MM .....	66
FIGURE 6-30 SHEAR PANELS IN WEB ELASTIC; GAP EFFECTIVE LENGTH 100 MM.....	67



FIGURE 6-31 SHEAR PANELS IN WEB ELASTIC; GAP EFFECTIVE LENGTH 150 MM .....	67
FIGURE 6-32 EFFECTIVE GAP LENGTH .....	68
FIGURE 6-33 EXAMPLE STRUCTURE.....	70
FIGURE 6-34 PLASTIC UNLOADING.....	71
FIGURE 6-35 ELASTIC UNLOADING.....	71
FIGURE 6-36 COMBINED ELEMENTS IN PARALLEL.....	71
FIGURE 6-37 TOP DISPLACEMENT FOR EARTHQUAKE LOADS.....	72
FIGURE 6-38 FREE VIBRATION DAMPING.....	72
FIGURE 6-39 IMPLEMENTATION OF NZNSEE STRENGTH (ZERO AXIAL STRESS).....	74
FIGURE 6-40 EFFECT OF AXIAL STRESS.....	75
FIGURE 6-41 COMPARISON NZNSEE AND FEMA : NO SURCHARGE.....	76
FIGURE 6-42 COMPARISON NZNSEE AND FEMA : 25 M SURCHARGE.....	76
FIGURE 6-43 AUCKLAND CUSTOMHOUSE IN-PLACE SHEAR TESTS.....	77
FIGURE 6-44 MASONRY CYCLIC BEHAVIOUR .....	78
FIGURE 6-45 URM DEGRADING HYSTERESIS.....	79
FIGURE 6-46 TIMBER FLOOR ELEMENT PROPERTIES .....	81
FIGURE 6-47 TIMBER FLOOR HYSTERESIS.....	81
FIGURE 6-48 EFFECT OF FRP STRENGTHENING ON URM WALL.....	83
FIGURE 6-49 EFFECTIVE SHEAR STRESS.....	84
FIGURE 6-50 EXTRACTED FRP STRENGTH .....	84
FIGURE 7-1 INTERACTION SHEET .....	89
FIGURE 7-2 ANSR MEMORY REQUIREMENTS .....	92
FIGURE 7-3 DIALOG FOR SETTING UP SHEETS .....	93
FIGURE 7-4 ANALYSIS DATA SHEET.....	94
FIGURE 7-5 RETURN PERIOD VERSUS AMPLITUDE.....	96
FIGURE 7-6 RAYLEIGH DAMPING .....	101
FIGURE 7-7 COLUMN LINE INPUT .....	105
FIGURE 7-8 ELEVATION INPUT.....	106
FIGURE 7-9 TIME HISTORY OUTPUT SPECIFICATION.....	107
FIGURE 7-10 DIALOG BOX FOR MODEL PLOT.....	108
FIGURE 7-11 EXAMPLE OF MODEL PLOT .....	109
FIGURE 7-12 MASONRY INPUT .....	110
FIGURE 7-13 CONCRETE INPUT .....	111
FIGURE 7-14 STEEL INPUT.....	112
FIGURE 7-15 TIMBER INPUT.....	112
FIGURE 7-16 TIMBER DIAPHRAGMS .....	113
FIGURE 7-17 OTHER MATERIALS INPUT .....	114
FIGURE 7-18 PLATE ELEMENT INPUT .....	115
FIGURE 7-19 (A) : FLEXURAL ELEMENT SECTION STIFFNESS .....	118
FIGURE 7-20 FLEXURAL ELEMENT DEGRADATION.....	120
FIGURE 7-21 BASE ISOLATOR ELEMENTS .....	122
FIGURE 7-22 DAMPER ELEMENTS.....	123
FIGURE 7-23 WALL ELEMENT INPUT .....	126
FIGURE 7-24 COLUMN ELEMENT INPUT .....	127
FIGURE 7-25 BEAM ELEMENT INPUT .....	128
FIGURE 7-26 BRACE ELEMENT INPUT .....	129
FIGURE 7-27 GAP ELEMENT INPUT .....	131
FIGURE 7-28 RIGID FLOOR INPUT .....	132
FIGURE 7-29 FLEXIBLE FLOOR ELEMENT INPUT.....	133
FIGURE 7-30 FLEXIBLE FLOOR ELEMENT MESH.....	134
FIGURE 7-31 FLOOR DIAPHRAGM CONNECTIVITY INPUT .....	135
FIGURE 7-32 ADDED MASS AND LOAD INPUT.....	136
FIGURE 7-33 USER SPECIFIED RESTRAINED DEGREE OF FREEDOM INPUT .....	137



FIGURE 7-34 USER SPECIFIED EQUAL DEGREE OF FREEDOM INPUT .....	138
FIGURE 7-35 FLOOR WEIGHTS .....	139
FIGURE 7-36 DISPLAY OF FLOOR WEIGHTS.....	139
FIGURE 7-37 AUTOCAD LINE DRAWING .....	140
FIGURE 7-38 AUTOCAD THREE DIMENSIONAL DRAWING .....	141
FIGURE 7-39 AUTOCAD DRAWINGS USING NON-RECTANGULAR SHAPES.....	142
FIGURE 8-1 GLOBAL AND LOCAL COORDINATE SYSTEMS.....	146
FIGURE 8-2 ANSR-L OPENING SCREEN .....	152
FIGURE 8-3 UNDEFORMED SHAPE .....	153
FIGURE 8-4 ANIMATION SELECTION.....	155
FIGURE 8-5 SCREEN DISPLAY DURING ANALYSIS.....	156
FIGURE 8-6 EFFECT OF SOLUTION PARAMETERS.....	168
FIGURE 9-1 FORCE PUSHOVER PROCEDURE .....	173
FIGURE 9-2 DEFINITION OF FORCE PUSHOVER.....	173
FIGURE 9-3 NSP WORKBOOK CONTROL SHEET.....	176
FIGURE 9-4 FEMA-273 NSP METHOD 1.....	177
FIGURE 9-5 FEMA-273 NSP METHOD 2.....	177
FIGURE 9-6 EXAMPLE NSP METHOD 1 .....	178
FIGURE 9-7 NSP LOG OF RESULTS .....	179
FIGURE 9-8 NDP SETS.....	179
FIGURE 9-9 PUSHOVER DIALOG BOX .....	180
FIGURE 9-10 DISPLACEMENT PUSHOVER CURVE FOR SHEAR WALL BUILDING .....	182
FIGURE 9-11 DISPLACEMENT PUSHOVER CURVE FOR DEGRADING BEAM FRAME .....	183
FIGURE 9-12 DISPLACEMENT PUSHOVER CURVE FOR DEGRADING BEAM AND COLUMN FRAME .....	183
FIGURE 9-13 DISPLACEMENT PUSHOVER FORCE .....	184
FIGURE 9-14 FORCE PUSHOVER CURVES .....	185
FIGURE 9-15 FORCE IMBALANCE FOR TOLERANCE 1% W .....	186
FIGURE 9-16 FORCE IMBALANCE FOR TOLERANCE 0.1% W .....	186
FIGURE 9-17 PUSHOVER DISPLACEMENT WITH DECAY .....	188
FIGURE 10-1 INTERFACE SHEET.....	190
FIGURE 10-2 MODEL PLOT DIALOG .....	205
FIGURE 10-3 MODEL PLOT FOR FRAME .....	206
FIGURE 10-4 MODEL PLOT FOR WALL.....	206
FIGURE 10-5 DATA ENTERED ON CONSTANTS SHEET .....	207
FIGURE 10-6 (A) AUTOCADLT RELEASE 2.0 .....	208
FIGURE 10-7 STRAIN / PLASTIC ROTATION CODED DXF FILE .....	209
FIGURE 10-8 CRACK PATTERN DXF FILE.....	210
FIGURE 11-1 FRP EFFECT ON URM WALL SPECIMEN.....	220
FIGURE 11-2 ANCHORAGE OF FRP .....	221
FIGURE 12-1 ROOF ACCELERATION TIME HISTORY .....	225
FIGURE 12-2 PORTION OF ROOF ACCELERATION TIME HISTORY .....	225
FIGURE 12-3 ACCELERATION RESPONSE SPECTRUM (UNDAMPED).....	226
FIGURE 12-4 PROFILE OF FLOOR ACCELERATIONS .....	227
FIGURE 12-5 HYSTERESIS FOR SHEAR WALL BUILDING .....	229
FIGURE 12-6 TYPICAL MOMENT CURVATURE CURVE .....	230
FIGURE 14-1 WAIKATO POLYTECH BLOCK F .....	238
FIGURE 14-2 CANTERBURY UNIVERSITY STUDENT UNION.....	239
FIGURE 14-3 INVERCARGILL CIVIC BUILDING .....	239



FIGURE 14-4 ARMAGH STREET TOWER .....	239
FIGURE 14-5 CHRISTCHURCH DRAINAGE BOARD BUILDING .....	239
FIGURE 14-6 THE BEEHIVE .....	240
FIGURE 14-7 BASTIA HILL WATER TOWER .....	240
FIGURE 14-8 BEAUMONT STREET .....	240
FIGURE 14-9 SYMONDS STREET .....	241
FIGURE 14-10 CLOCK TOWER .....	241
FIGURE 14-11 LORNE STREET .....	241
FIGURE 14-12 OLD BOYS SCHOOL .....	241
FIGURE 14-13 THE GATEWAY .....	242
FIGURE 14-14 PANAMA STREET .....	242
FIGURE 14-15 AUCKLAND MUSEUM .....	242
FIGURE 14-16 NZI AND SBI BUILDINGS .....	243
FIGURE 14-17 RADISSON HUNTLEY .....	243
FIGURE 14-18 AUCKLAND RAILWAY STATION .....	243
FIGURE 14-19 QUEEN STREET BUILDINGS .....	244
FIGURE 14-20 CHRISTCHURCH CATHEDRAL .....	244
FIGURE 14-21 GALBRAITH BUILDING .....	245
FIGURE 14-22 HIGHT LIBRARY .....	245
FIGURE 14-23 RIVERSIDE CASINO .....	245
FIGURE 14-24 COCOA BUILDING .....	245



## LIST OF TABLES

TABLE 2-1 SEISMIC HAZARD LEVELS .....	9
TABLE 2-2 BUILDING PERFORMANCE LEVELS .....	10
TABLE 2-3 DAMAGE TO STRUCTURAL ELEMENTS.....	11
TABLE 3-1 EXAMPLE EXECUTION TIMES 300 MHZ PENTIUM II .....	16
TABLE 4-1 EARTHQUAKE SCALE FACTORS .....	21
TABLE 4-2 RECORDS AT SOIL SITES > 10 KM FROM SOURCES .....	27
TABLE 4-3 RECORDS AT SOIL SITES NEAR SOURCES.....	27
TABLE 5-1 ACCURACY OF PLANE STRESS ELEMENTS.....	32
TABLE 5-2 MASS OPTIONS.....	37
TABLE 5-3 RECOMMENDED MASS OPTIONS.....	38
TABLE 5-4 CALCULATION OF MASS ECCENTRICITIES.....	39
TABLE 6-1 EXAMPLE DEGRADATION COEFFICIENTS .....	47
TABLE 6-2 VARIATIONS OF GRID REFINEMENT.....	62
TABLE 6-3 TYFO MATERIAL PROPERTIES.....	82
TABLE 6-4 STRENGTH PROVIDED BY FRP OVERLAY.....	85
TABLE 7-1 FILES CREATED BY MODELA.....	87
TABLE 8-1 KEYS ACTIVE FOR UNDEFORMED SHAPE.....	153
TABLE 8-2 KEYS ACTIVE FOR DEFORMED SHAPE.....	155
TABLE 8-3 ANIMATION OPTIONS.....	159
TABLE 8-4 NODAL COMPONENT OPTIONS .....	160
TABLE 8-5 (A) : ELEMENT COMPONENT OPTIONS.....	160
TABLE 8-6 VARIATIONS IN SOLUTION PARAMETERS .....	167
TABLE 8-7 EFFECT OF SOLUTION PARAMETERS.....	167
TABLE 10-1 TRUSS COMPONENTS .....	200
TABLE 10-2 BEAM COMPONENTS.....	201
TABLE 10-3 COLUMN COMPONENTS.....	201
TABLE 10-4 WALL COMPONENTS.....	202
TABLE 10-5 FLOOR COMPONENTS.....	203
TABLE 10-6 GAP COMPONENTS .....	204
TABLE 10-7 ANSROUT FILES .....	211
TABLE 11-1 CONCRETE BEAM ACCEPTANCE CRITERIA .....	213
TABLE 11-2 CONCRETE COLUMN ACCEPTANCE CRITERIA .....	214
TABLE 11-3 FLEXURAL WALL ACCEPTANCE CRITERIA .....	217
TABLE 11-4 CRITERIA FOR WALLS CONTROLLED BY SHEAR .....	217
TABLE 11-5 NZNSEE LIMITS FOR FACE LOADED URM WALLS .....	219
TABLE 11-6 FEMA-273 LIMITS FOR FACE LOADED URM WALLS.....	219
TABLE 11-7 ANCHORAGE OF FRP .....	221
TABLE 11-8 PRESUMPTIVE ULTIMATE FOUNDATION PRESSURES.....	222



TABLE 12-1 COLUMN DUCTILITY .....	230
TABLE 12-2 EXAMPLE BEAM-COLUMN JOINT EVALUATION .....	234
TABLE 13-1 CURRENT TASK LIST .....	236
TABLE 14-1 PROJECT LIST .....	237